

MONROVIA®

YEARS

SummerWinds Arizona
2026 Product Knowledge



MONROVIA®
100
YEARS

2026 Programs

Landscape Legends Anniversary Collection

Bee A Winner Giveaway

Hummingbird Displays

Lavender Exclusive

BEE A
WINNER

WIN A FREE PLANT!

YOUR CHANCE TO WIN A
POLLINATOR-FRIENDLY PLANT
FROM MONROVIA

Scan the code:



Or enter online at
monrovia.me/bee


MONROVIA[®]
Grow Beautifully

MONROVIA[®]

YEARS

Bee a Winner In-Store Plant Giveaway

April 22 – May 3 for Arizona

- Instagram Grand Prize for \$500 shopping spree at one location nationwide

ADDING: SMS/Text # Collection in addition to your opt-in email leads

Build a great display and use all your POP to maximize entries!

- Large display poster
- Tabletop A-frame
- Instagram Spotlight H-frame
- Countercard



Tag this display
on Instagram for your
chance to win BIG!

\$500 WORTH OF MONROVIA PLANTS
TO ONE LUCKY WINNER CHOSEN
AT RANDOM

Take a photo of the display

Use #BeeAWinner
and mention @monroviaplants and

@

Post by May 30th

Full details at monrovia.me/win


MONROVIA[®]
Grow Beautifully

6109951

SHOWN: COLORITA™ LILY, FERTILIZERS

600577X

MONROVIA®
100
YEARS

LANDSCAPE LEGENDS

The Anniversary Collection from Monrovia



TOP-PERFORMING VARIETIES PROVEN TO THRIVE IN
GARDENS JUST LIKE YOURS.



HAND-SELECTED FOR BEAUTY, RESILIENCE,
AND RELIABILITY.



GROWN WITH CARE. PROVEN IN THE LANDSCAPE.
LOVED BY GARDENERS ACROSS YOUR REGION.



MONROVIA®
100
YEARS

Anniversary Collection feat. “Landscape Legends”

The Anniversary Collection of Landscape Legends are the 100 plants/series we will feature throughout our 100th year celebrations.

They are plants that have “earned their place in history” – notable introductions from Monrovia.

Display our Landscape Legends poster with your selections to help customers know you are a source for these highly-promoted plants.



MONROVIA®
100
YEARS

Little Ollie® Dwarf Olive *Olea europaea* 'Montra'

- One of the most influential Monrovia Plant introductions to the Southwest deserts.
- Introduced in 1987
- Noted for slow growing mound to 6 feet, featuring dense growth habit and easy pruning to keep in shape.
- Is 99% fruitless, very rare to set any fruit, if so in very small amounts.



Image: Doreen Wynja

MONROVIA®
100
YEARS

Katrina® African Iris **Dietes x 'NOLA alba' PP #21,460**

- **History– Selected by Peter Perrino, MN customer from Perrino's Nursery in Louisiana in 2007.**
- **American Wetlands Association portion of profits, to restore Wetlands damaged by Hurricane Katrina.**
- **Selected for improved disease resistance, and heat tolerance.**
- **Very floriferous! Seldom sets unsightly seedpods**
- **Grows to average 3x3 feet**

MONROVIA®
100
YEARS

**Oo-LaOo-La-La®
Bougainvillea**

Bougainvillea hybrid
'Monka'

A Monrovia staple
since introduced in
1989.

First found in
Brazil by naturalist
Philibert
Commerçon

French explorer,
captain/Admiral
Louis-Antoine de
Bougainvillea.

2 ft tall X 6 ft wide



**Purple Queen®
Bougainvillea**
Bougainvillea 'Moneth'

A Monrovia staple
brought to market in
1989

Works both as a larger
growing vine to 15
feet, but as well as a
lower growing shrub 2
tall by 8 feet wide.

Great container plant.

MONROVIA®
100
YEARS

**Red Dragon®
Hibiscus**

Brilliant double
Red Hibiscus.

Growth up to 8 ft
X 4 ft

Long standing
Monrovia icon,
since 1960



**Gardenia First Love
Gardenia**
Gardenia jasminoides
'Aimee'

.Noted for its large 4 inch
fragrant flowers.

Reaching 5-6 feet on
average.

We graft this and other
varieties onto *Gardenia*
thunbergia.

The name Aimee originates
from the developer's
daughter's name, who
passed away in a plane crash.

MONROVIA®
100
YEARS

**Summer Soul® Arabian
Jasmine**

Jasminum sambac
'Monhariklia' PP #27,171

Fragrant double
flowers

4 X 4 feet on
average in AZ,
tends to have fuller
compact growth
habit.

Jasmine long history
Selection brought to
us from the
descendent of
Greek family's
heirloom plant in the
family garden. 2015

**Victory Pyracantha
Pyracantha koidzumii
'Victory'**



Image: Doreen Wynja

Another Monrovia
staple variety from
the 1980's

Producing abundant
red berries.

Large grower up to
10ft with age.

Berries attract birds.

MONROVIA®
100
YEARS

**White Lightnin'® Trailing
Lantana**
Lantana sellowiana 'Monma'



**Teenie Genie® Compact
Lantana**
Lantana camara 'Monike'

**One of the 1st
compact varieties.**

**An introduction
from 2005.**

**An appropriately
named small
compact variety to
24-30inch compact
mound shape.**



A Monrovia Staple since
1990.

Low grower 10 inches by
5 feet producing vibrant
white flowers.

MONROVIA®
 100 
YEARS

SummerWinds Exclusive
Plant Collection for 2026

Exclusive



MONROVIA®
100
YEARS

Lavinnova® Lavender Collection

- 13 new Exclusive selections for Summerwinds **ONLY!**
- Bringing together more than 25 years of world-class Lavender breeding, LAVINNOVA® represents the very best quality Lavender varieties for home gardeners and horticulturalists across the globe.
- The master plant breeders at LAVINNOVA® have been refining their selections and choosing the 'best of the best' from many thousands of new plants they have created.
- It is this careful selection, made with an eye attuned to the needs of modern gardeners, that is the key to success.

Zones 7-10



LAVINNOVA®
THE LAVENDER REVOLUTION

MONROVIA®
100
YEARS

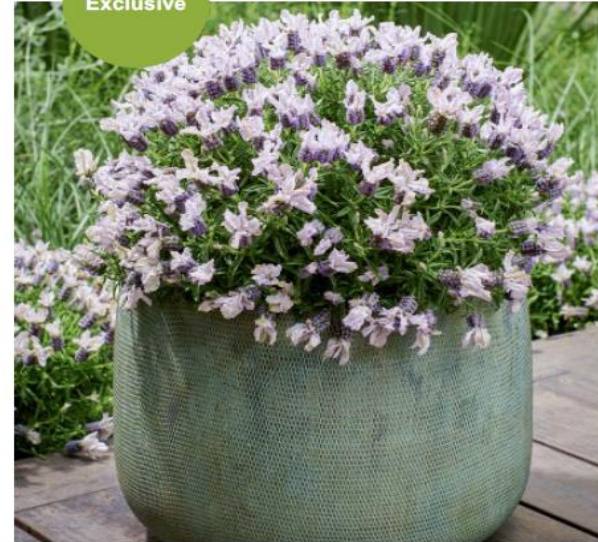
Gm

Exclusive



LAVINNOVA THE
QUEEN

Exclusive



LAVINNOVA BLUSH

Exclusive



LAVINNOVA
PURE WHITE

Exclusive



LAVINNOVA BABY PINK
PRINCESS

MONROVIA®
100 YEARS

LANINNOVA
PURPLE SUPREME

LAVINNOVA THE
PRINCESS



LAVINNOVA HOT
PINK



MONROVIA®

GROW A HUMMINGBIRD GARDEN

IDEAS FOR EVERY SPACE

SCAN FOR PLANTING PLANS



AS SEEN IN: *Backyard Habits Guide*
HOW TO CREATE A GARDEN ABUNDANT IN LIFE AND BEAUTY

MONROVIA®
Grow Beautifully

Hummingbird Weekend Project Plan

 <p>Blue Boa Agapanthus Tall, deep violet-blue flower spikes bloom atop an upright, weir-shaped form. This low-maintenance beauty is perfect for mass plantings or as a focal point. Attracts hummingbirds and butterflies and is drought tolerant once established. UP TO 24" TALL, 18" WIDE FULL SUN #400052</p>	 <p>Safari Orange Aloe Hummingbirds love the brilliant orange flower clusters on this compact, repeating plant. Makes a stunning statement in a container and works well as a centerpiece for rock gardens. UP TO 18" TALL, 40" WIDE PARTIAL TO FULL SUN ZONES 9-11 #200053</p>	 <p>Colorburst® Yellow Cape Fuchsia An exclusive Cape Fuchsia from Monrovia, with vibrant yellow flower clusters that attract nectar-seeking visitors from everywhere to eat. This variety offers a seemingly endless supply of tubular, nectar-rich flowers during the growing season. UP TO 3' TALL, 2' WIDE PARTIAL SHADE TO PARTIAL SUN ZONES 9-11 #40942</p>	 <p>Chateau® de Versailles Rose of Sharon This Monrovia exclusive shrub impresses with large, showy blue-violet flowers bearing deep red violet centers that act as a balm for hummingbirds. It offers height, a long bloom season, and attractive green foliage. UP TO 6' TALL, 4' WIDE PARTIAL TO FULL SUN ZONES 5-9 #40947</p>
---	---	--	--

Scan for the full guide

601355AF

MONROVIA®
100 YEARS

Hummingbird Program

Extend the excitement of Bee a Winner

Showcase hummingbird plants right for your region

Free downloadable garden plans show gardeners how to plant hummingbird gardens of any size: Container, corner, or complete hummingbird haven.

Set up anytime, and keep your display updated with hummingbird plants to suit the season

Marketing toolkit with digital graphics

<https://go.monrovia.com/retail-programs#hummer>

MONROVIA®
100
YEARS

2026 New Monrovia Plant Line Up



MONROVIA®

100

YEARS

Blue Flame Agave **Agave 'Blue Flame'**

- Forms beautiful, large rosettes of finely serrated blue-green foliage with a flexible terminal spine. Forms large , dense clumps of rosettes growing 2 to 3 ft. tall, 3-4 ft.wide.
- Partial, filtered sun, not full or hot exposed sunny areas.
- Floppy leaves, with soft tips,
- Cross between Agave shawii and attenuate in the 1960's from UCLA Mildres Mathias Botanical Garden. Introduced to the market by Huntington Botanical Gardens in 2005.
- Colder tolerant than the regular species attenuata 20-25 deg



MONROVIA®
100
YEARS

Vanzie Agave *Agave ovatifolia* 'Vanzie'

- **Light:** Full sun, partial sun
- **Water:** Water when soil is dry
- **Size:** slowly reaches 4ft, tall 4 feet wide.
- **Know for its deep cup blueish leaves, and cold hardy to zero.**



MONROVIA®

100

YEARS

**Agave attenuata x ocahui –
'Blue Glow' Variegated**

- A unique selection from Micro Paradox that is from the Familiar Blue Glow, that has vibrant yellow margins against the classic blue glow leaf.
- Probably best with some filtered light/shade to protect the variegated margins.
- Scheduled for release fall of 2026



MONROVIA®

100
YEARS

Snow Glow Agave **Agave 'Snow Glow'**

- **Shade to filtered shade, variegation will burn in the desert sun.**
- **SIZE: Reaches 1 to 2 ft. tall, 2 to 3 ft. wide**
- **Known for striking variegation of creamy white smooth leaves with maroon edging along the tips.**
- **Cold hardy 20-25 deg.**
- **Scheduled for fall of 2026**



Medivera®
Tropical Aloe Vera
Aloe vera 'Tropical'

Grows up to 12 inches.
An improvement of the classic Aloe vera, compact growth and firm leaves, that stand up and are green.

Great and easy house plant.

Both varieties contain the medicinal Gel in the leaves.

MONROVIA®
100
YEARS

MEDIVERA®
'EQUATOR'
Aloe
Aloe PP25083P3





MONROVIA®
100
YEARS

Spek-tacular Cast Iron Plant *Aspidistra elatior* 'Spek-tacular'

- **SIZE:** Foliage reaches 3 ft. tall forming 3-4 ft. wide clump.
- **Great plant for shade especially deep shade. Can be used as a house plant as well.**
- **Known for the speckled leaves giving it some unusual color compared to the green of the regular species.**
- **Originally plants of the Genus *Aspidistra* came from the Osumi island of Japan**



MONROVIA®
100
YEARS

Mexicali Rose Fairy Duster
Calliandra x californica
'Mexicali Rose' PPAF

- Superb full sun Shrub, growing 4X4 feet in a very symmetrical rounded shape naturally.
- Developed by Civanos nursery in Tucson.
- Known for larger pink and longer flowering period flowers than the regular species.
- Great wildlife shrub attracting hummingbirds, butterflies and bees!



MONROVIA®
100
YEARS

Tiny Pampa Pampas Grass
***Cortaderia selloana* 'Day10'**
PP #36,606

- The most compact pampas grass on the market, growing to a fraction of the size of a traditional pampas grass while still boasting an abundance of large, feathery, creamy white panicles. Perfect for smaller gardens. in containers.
- Grows to 2 feet with plums rising above foliage.
- Seeds thought to be sterile, so not invasive like the old regular Pampas grass.



MONROVIA®
100
YEARS

Magic Star Cordyline *Cordyline australis* 'TUS020

- **Great container plant for cool season color, full sun in late fall through winter, partial shade ok as well.**
- **Growing to 2-3 feet**
- **Attractive variegated foliage that fades to pink hues at the base of the leaves as the leaves mature.**



MONROVIA®
100
YEARS

Siskiyou Woolly Sunflower **Eriophyllum lanatum 'Siskiyou'**

- **Native western plant.**
- **Low growing 1 ft. to 3 ft wide.**
- **Best in filtered shade in desert climates.**
- **Fairly water wise, best in good drainage soil.**
- **Attracts pollinators such as bees and butterfly's!**
- **Larval host for painted lady butterfly**

MONROVIA®
100
YEARS

California Sunset Pomegranate
Punica granatum 'California Sunset'

Not new but underused!!

Ornamental
pomegranate, does not
produce fruit, but
attractive flowers, and
pretty bullet proof with
the desert heat and sun.

**Grows up to 10 feet, can
be kept smaller.**



Toyosho Pomegranate
Punica granatum 'Toyosho'

Toyosho has Apricot pink
flowers.



MONROVIA®
100
YEARS

Pozo Blue Sage Salvia 'Pozo Blue'

Pozo Blue is a hybrid of *Salvia clevelandii* and *Salvia leucophylla*, introduced by Las Pilitas Nursery.

Noted for well rounded form 4 X 4 feet, both good tolerance for cold and heat.

These native type salvia are well know for outstanding pollinator and wildlife plants. Especially attracting bees, butterflies and hummingbirds!

Key is no wet feet.

In PHX, filtered shade still probably best



Allen Chickering Sage Salvia 'Allen Chickering'

Another cross between *Salvia blue* and purple sage at Ranch Santa Ana botanical gardens by Allen Chickering.

Introduced in 1955 to the trade.

A proven durable sage for 70 years.

Winnifred Gilman Blue Sage

Salvia clevelandii
'Winnifred Gilman'

A *Salvia Cleveland* selection from Strybing arboretum introduced to the nsry trade in 1990.

Grows 3-4 feet.

Known for its electric blue-purple flowers and the reddish stems along the top foot.





MONROVIA®
100
YEARS

White Sage *Salvia apiana*

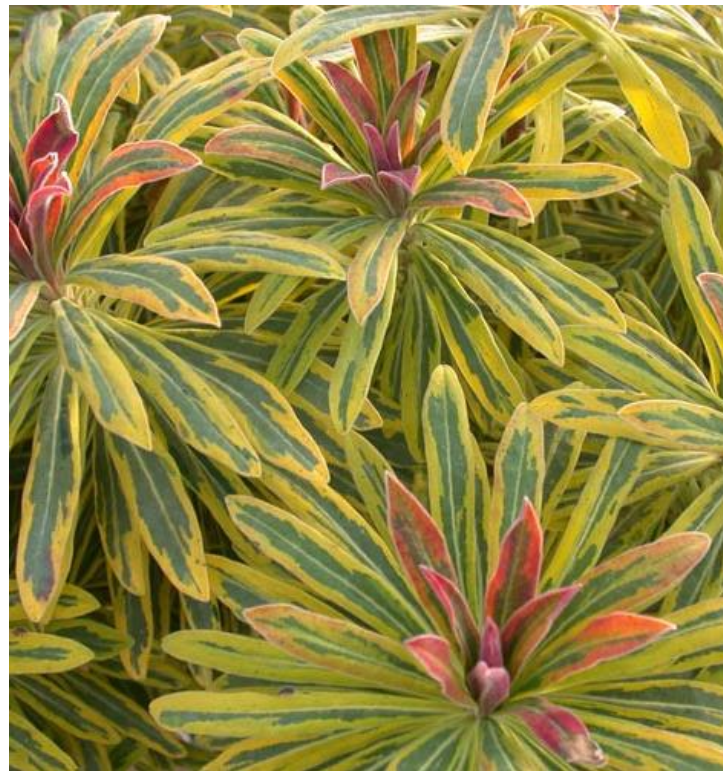
- Grows on average 3-4 feet, more compact and denser than the *Salvia clevelandi* selections.
- A native plant with a wide range from inland areas of Calif, to lower mountains, and upper Mohave desert.
- Soil must dry between waterings.
- Produces white flower on stalks that arise about foliage.
- Foliage is very fragrant!!
- Is a great pollinator plant as well.
- Used by native Americans medicinally, and purification ceremonies.

MONROVIA®
100
YEARS

**Miner's Merlot
Spurge**
Euphorbia 'KM-
MM024'



Ascot Rainbow Spurge
Euphorbia x martinii
'Ascot Rainbow' PP
#21,401





MONROVIA®

100

YEARS

Cool as Ice Fescue

**Festuca x 'Cool as Ice' PP
#27,651**

Low growing 10-12 inches. Best filtered shade

Gray new foliage matures into a steely blue color.

Has better heat tolerance than species.

Good drainage is key to maintain through the summer.



MONROVIA®

100

YEARS

Glow Sticks Tall Fescue
***Festuca arundinacea* 'Glow**
Sticks' PP #34,648

A taller green leaf Fescue, noted for its bright yellow flower stalks.

Grows up to 18 inches.

Best filtered shade/light.

Develops deep roots for better drought tolerance.

Would make a good container plant

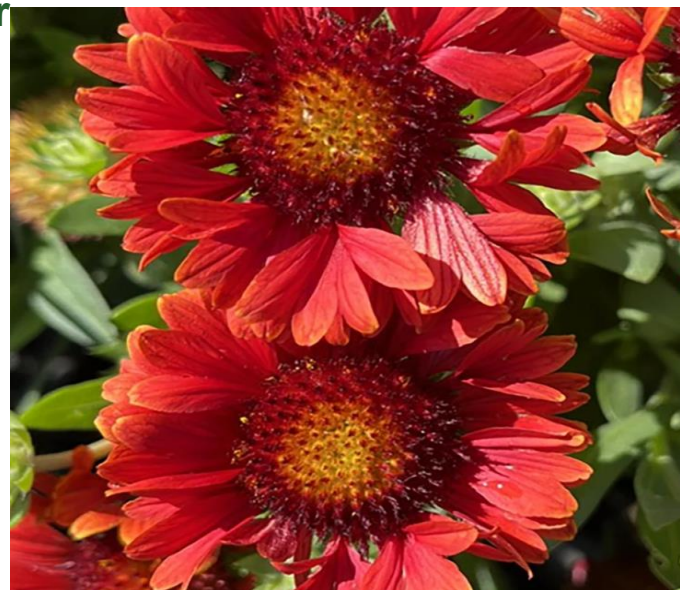


MONROVIA®

Grow Beautifully



**Guapa Flamenco Bicolor
Blanket Flower**
Gaillardia aristata
'FLOGB0060'



**Guapa Red Blanket
Flower**
Gaillardia aristata
'FLOGB0014'



**Gusto™ Orange Zest
Blanket Flower**
Gaillardia



**SpinTop® Mariachi Red
Blanket Flower**
Gaillardia 'Mariachi Red'

New Intro



MONROVIA®
100 YEARS

**Bacio del Sole Oxeye
Sunflower**
**Heliopsis 'Bacio del
Sole'**
False Sunflower

Bacio del sole means
"KISS OF THE SUN"
This series grows on
average 15-20 inches

**Punto Rosso Oxeye
Sunflower**
Heliopsis helianthoides



**Sole Giatto Oxeye
Sunflower**
Heliopsis helianthoides

MONROVIA®
100
YEARS



Visional Fuchsia
Salvia
Salvia greggii 'Visional
Fuchsia'

A more compact selection
12-16 inches.

Profusion of deep fuchsia
blooms

Good pollinator plant.

Filtered shade in PHX
market.

Great seasonal container
plant



Visional Purple
Salvia
Salvia greggii 'Visional
Purple'

New Intro



MONROVIA®

100
YEARS

Citrus Twist Yucca *Yucca gloriosa* 'Citrus Twist'

Can grow up to 4 feet. Small if in a container.

I see the best use as a low water use container plant, that can be moved around with the changing season. Fall into early spring sun, summer moved to more shade.

Know for striking foliage.



KEY PLANT STATUS OF SOME 2026 Plants Antigonon

Antigonon –Coral vine—ready for spring 2026

Bauhinia Hong Kong trees– ready now!

Sophora Texas Mnt Laurel– ready now, most have buds

Mascagnia– Orchid vine– ready for spring.

Ilex Will Flemming– ready March/April

Lantana– should start seeing some late February

Carissa Tomlinson– late summer/ early fall

Olea little Ollie Patio tree--- Late summer?

MONROVIA®

GROW LAVENDER
CONFIDENTLY

COMPLETE CARE GUIDE

SCAN FOR
CARE GUIDE



60137SAF

MONROVIA®
100 YEARS

Lavender Week

May 11 – 17, 2026 (week after Mother's Day)

Celebrating all the reasons to love lavender:
pollinators; drought tolerant; relaxing

New program poster with QR code linked to care
guide.

<https://go.monrovia.com/retail-programs#lav>



Contact

Jim Rupe

928-713-8126

Jim.rupe@monrovia.com

Renee Nylén

Renee.nylen@monrovia.com

- K

